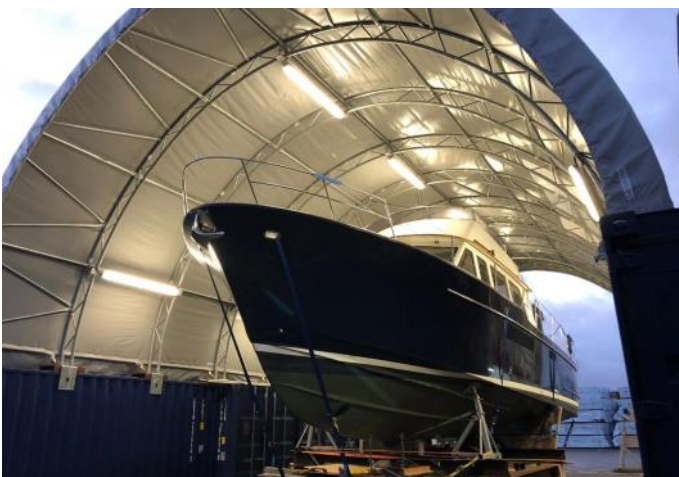


PRODUCT SPEC SHEET  
PRODUCT KEY: DT10C SERIES

PHONE: 01757 289067  
EMAIL: INFO@SHELTERIT.CO.UK  
WEBSITE: WWW.SHELTERIT.CO.UK



# PRODUCT SPEC SHEET

## PRODUCT KEY: DT10C SERIES

PHONE: 01757 289067  
 EMAIL: INFO@SHELTERIT.CO.UK  
 WEBSITE: WWW.SHELTERIT.CO.UK

<b>WIDTH</b>	998cm (9.98m or 33ft)
<b>HEIGHT</b>	500cm (Peak) - 759cm (On std. container)
<b>WIDTH BETWEEN CONTAINERS</b>	928cm (9.28m)
<b>ARCH SPACINGS</b>	200cm approx. (Centre to centre)
<b>FRAME SPEC</b>	Hot-dip Galvanised Steel. Main steel profile 60 x 1.5mm Double Truss Arches
<b>FRAME BRACING</b>	Steel support wind bracing in the end bays
<b>FABRIC</b>	Heavy duty 610g/m <sup>2</sup> PVC Cover
<b>FABRIC DETAILS</b>	Tensile Strength (Grab) (BS EN ISO 13934-2:2014) Warp 180Kg - Weft 140Kg Tear Strength by Falling Pendulum. Apparatus (BS EN ISO 13937-1:2000) Tear of Warp Threads >6500g - Tear of Weft Threads 6380g Meets Solar UV Protective Properties for Textile Material (EN 13758-1:2001+A1:2006)
<b>GABLE END PANEL OPTIONS</b>	Full Gable Panel with 1No. Winch-up Door. W 400cm x H 470cm (accessible height) Tiger BHW Brake Hand Winch. These units meet and exceed all the requirements within BS EN 13157: 2004+A1:2009. 1No. personnel access, roll-up door opening. W 90cm x H 210cm. Full Gable Rear Panel Half Gable Panel (Netted or PVC)
<b>COLOURS <sup>1</sup></b>	White (RAL 9003) Grey (RAL 7037) Green (RAL 6006)
<b>ANCHORING &amp; FIXING</b>	<b>Shipping Containers</b> - Base plates welded to container tops and sides. <b>Concrete Blocks</b> - Base plates require fixing with M16 Expansion Bolts (Extra Cost). We only recommended that the canopy be installed on sites with stable and level ground.
<b>SHIPPING WEIGHT &amp; SIZES <sup>2</sup></b>	DT10C-6 - 850 KG 1No. W 236cm x L 110cm x H 95cm DT10C-12 - 1400 KG 2No. W 236cm x L 110cm x H 95cm DT10C-18 - 1970 KG 2No. W 236cm x L 110cm x H 95cm
<b>INSTALLATION TIME (3 PERSONS—DIY)</b>	3-4 DAYS
<b>RECOMMENDED EQUIPMENT</b>	Offloading: Forklift Installation: We use a 9m telehandler and a 9.8m scissor-lift.
<b>EXPECTED LIFE SPAN <sup>3</sup></b>	Galvanised Steel Frame- 10+ Years 610g/m <sup>2</sup> PVC Cover - 5+ Years
<b>WARRANTY <sup>4</sup></b>	1 year on all components

<sup>1</sup> RAL numbers are as close an estimate as could be made, actual colour may vary slightly from screen to screen.

<sup>2</sup> Shipping weight is approximate to the most recent stock check completed.

<sup>3</sup> Life span is according to good practice and fair conditions. The PVC will require some maintenance i.e. tensioning the ratchet straps every 6 months or more to keep the fabric taut. Item is a temporary demountable structure & should be treated as such.

<sup>4</sup> Warranty covers manufacturing defects only. Any damage caused by environmental conditions whilst in the box or whilst being installed or during excessive wind or snow load is not covered.