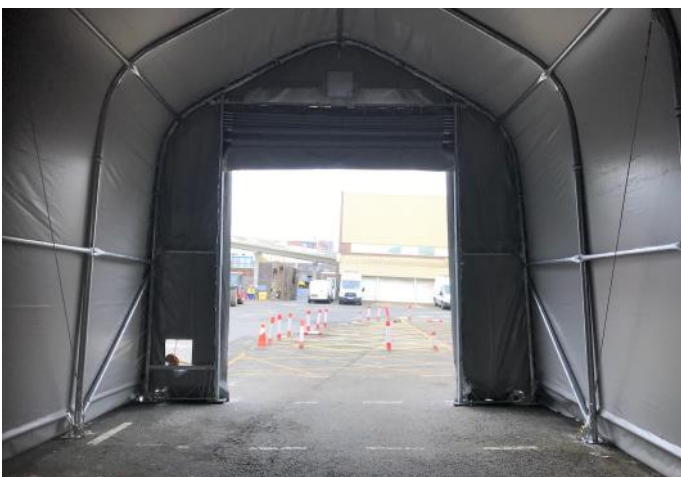


PRODUCT SPEC SHEET
PRODUCT KEY: ST5.5 SERIES

PHONE: 01757 289067
EMAIL: INFO@SHELTERIT.CO.UK
WEBSITE: WWW.SHELTERIT.CO.UK



PRODUCT SPEC SHEET

PRODUCT KEY: ST5.5 SERIES

PHONE: 01757 289067
 EMAIL: INFO@SHELTERIT.CO.UK
 WEBSITE: WWW.SHELTERIT.CO.UK

WIDTH	550cm (5.5m or 18ft)
HEIGHT	410cm (Eaves) - 530cm (Peak)
ARCH SPACINGS	200cm (Centre to centre)
FRAME SPEC	Hot-dip Galvanised Steel. Main steel profile 76 x 2.0mm Steel Arch Tubing
FRAME BRACING	Steel support wind bracing Steel wire side-wall tensioning
FABRIC	Heavy duty 610g/m ² PVC Cover
FABRIC DETAILS	Tensile Strength (Grab) (BS EN ISO 13934-2:2014) Warp 180Kg - Weft 140Kg Tear Strength by Falling Pendulum. Apparatus (BS EN ISO 13937-1:2000) Tear of Warp Threads >6500g - Tear of Weft Threads 6380g Meets Solar UV Protective Properties for Textile Material (EN 13758-1:2001+A1:2006)
DOOR SPEC	1No. Winch-up Door. W 340cm x H 400cm (accessible height) .Tiger BHW Brake Hand Winch. These units meet and exceed all the requirements within BS EN 13157: 2004+A1:2009
PERSONNEL DOOR SPEC	No personnel door in the model.
COLOURS ¹	White (RAL 9003) Grey (RAL 7037) Green (RAL 6006)
ANCHORING	Hard Core - Grounding Pins (Supplied in the kit) Concrete - M16 Expansion Bolts (Extra Cost) We only recommended that the shelter be installed on a stable base with the ability to achieve a good and sustainable fixing position under each base plate.
SHIPPING WEIGHT & SIZES ²	ST5.5-10 - 1160 KG 1No. W 292cm x L 110cm x H 74cm ST5.5-14 - 1420 KG 1No. W 292cm x L 110cm x H 87cm ST5.5-18 - 1685 KG 1No. W 292cm x L 110cm x H 100cm
INSTALLATION TIME (3 PERSONS—DIY)	2-3 DAYS
RECOMMENDED EQUIPMENT	Offloading: Forklift Installation: We use a 9m telehandler and a 9.8m scissor-lift.
EXPECTED LIFE SPAN ³	Galvanised Steel Frame- 10+ Years 610g/m ² PVC Cover - 5+ Years
WARRANTY ⁴	1 year on all components

¹ RAL numbers are as close an estimate as could be made, actual colour may vary slightly screen to screen.

² Shipping weight is approximate to the most recent stock check completed.

³ Life span is according to good practice and fair conditions. The PVC will require some maintenance i.e. tensioning the ratchet straps every 6 months or more to keep the fabric taut. Item is a temporary demountable structure & should be treated as such.

⁴ Warranty covers manufacturing defects only. Any damage caused by environmental conditions whilst in the box or whilst being installed or during excessive wind or snow load is not covered.